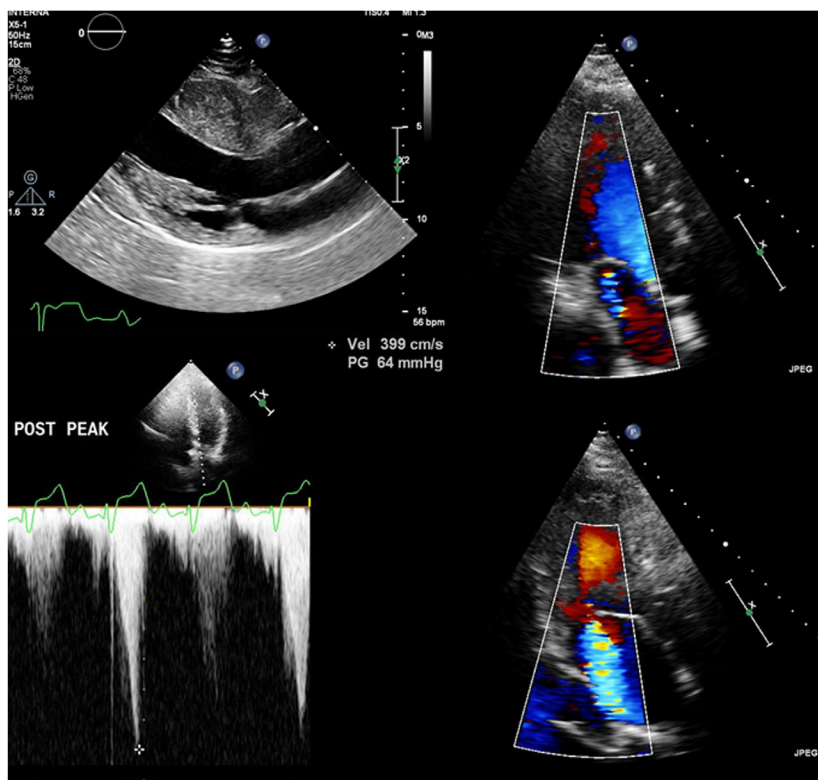


3rd EAST BOHEMIA STRESS ECHOCARDIOGRAPHY ON-LINE COURSE

27. 5. 2022



Welcome to the 3rd East Bohemia Stress Echocardiography On-line Course

Dear colleagues,

Stress echocardiography plays important role in investigation of patients with known or suspected ischaemic heart disease, but also in valvular and structural heart disease. It benefits from being low cost and radiation-free method with high accuracy, which can be performed with minimal additional staffing or technical requirements.

The on-line course objective is to familiarise participants with all aspects of stress echocardiography, newly including introduction into myocardial contrast echocardiography and coronary flow reserve. It is designed mainly for cardiologists and echocardiographers who are interested in stress echocardiography and want to set up or further develop their service. Lectures on principles and practical aspects of stress echocardiography are accompanied by illustrative case reports.

We are looking forward to meeting you on-line in May 2022!

Dr Karel Medilek FRCP
Course director



9:00–9:10 Welcome

9:10–10:30 Introduction to stress and contrast echocardiography

1. **Why functional imaging? The role of stress echocardiography in CAD + Q&A**
B Shah
2. **Contrast echocardiography A to Z + Q&A**
A Borg

10:30–10:45 Break

10:45–12:20 Stress echocardiography modalities for ischaemia

3. **Dobutamine stress echo**
K Medilek
4. **Vasodilator stress echo**
N Gaibazzi
5. **Exercise stress echo**
A Borg
Q&A
6. **How to approach ischaemic stress echo studies + Q&A**
R Khattar

12:20–13:00 Break

13:00–14:20 „Advanced“ stress echocardiography

7. **Stress echo for non-ischaemic indications**
B Shah
8. **CFR – coronary flow reserve**
N Gaibazzi
9. **MCE - myocardial contrast echocardiography**
R Khattar
Q&A

14:20–14:45 Break

14:45–16:20 Stress echocardiography in clinical practice

10. **How to set up your stress echo lab**
K Medilek
11. **(Almost) live cases from stress echo lab**
K Medilek
Q&A
12. **Case reports 2**
panel

16:20–16:30 Closing remarks

Registration

Registration is possible on-line only and is confirmed upon the on-line payment at the time of registration. The registration fee is 25 €.

Access to the course

The access code for the course will be available from the personal account created at the time of registration. Personal link will be sent to the registered e-mail before the course date. Lectures will be available for registered participants on demand until 30th June 2022.

Continuous Professional Development (CPD) points

Accreditation by European Board for Accreditation in Cardiology (EBAC) was applied for. Certificates of attendance will be distributed to the registered e-mail. The certificate will be based on the real-time tracked spent viewing the course.

References

The programme is based on the following ESC guidelines/EACVI recommendations and expert consensus papers:

- 2019 ESC Guidelines for the diagnosis and management of chronic coronary syndromes: The Task Force for the diagnosis and management of chronic coronary syndromes of the European Society of Cardiology (ESC)
- 2017 Clinical practice of contrast echocardiography: recommendation by the European Association of Cardiovascular Imaging (EACVI)
- 2016 The clinical use of stress echocardiography in non-ischaemic heart disease: recommendations from the European Association of Cardiovascular Imaging and the American Society of Echocardiography
- 2009 Stress Echocardiography Expert Consensus Statement–Executive Summary: European Association of Echocardiography (EAE) (a registered branch of the ESC)

Organising bodies

University Hospital Hradec Kralove, Czech Republic
Faculty of Medicine Hradec Kralove, Czech Republic

Faculty

Dr Alexander Borg

Mater Dei Hospital, Msida, Malta

Dr Nicola Gaibazzi

Parma University Hospital, Parma, Italy

Dr Rajdeep Khattar

Royal Brompton Hospital, London, United Kingdom

Dr Karel Medilek

University Hospital Hradec Kralove, Czech Republic

Dr Benoy Shah

University Hospital Southampton, United Kingdom

Course language

English

Course website

www.stressechok.com

Inquires

echok@lfhk.cuni.cz

The course is organised under the auspices of Czech Society of Cardiology.

We thank to our sponsors:



LIFE FROM INSIDE



Authorised Distributor
Philips Healthcare

